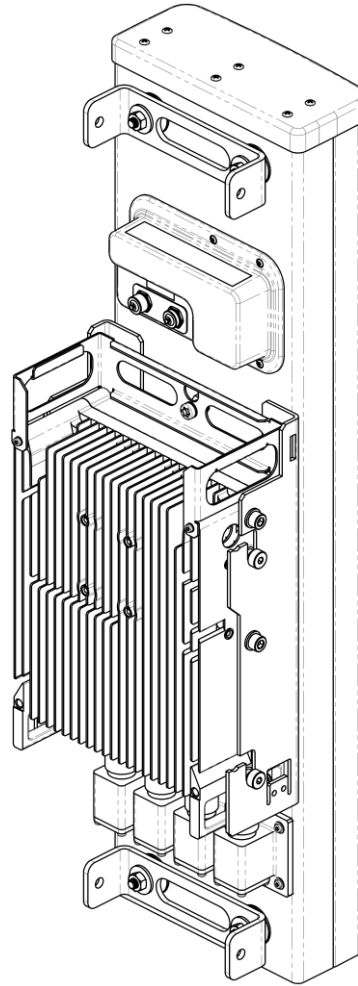


Zillink Radio Assembly Installation Guide



The installation, maintenance, or removal of an antenna requires qualified, experienced personnel. You must refer to the appropriate local safety codes and ensure proper electrical and electromagnetic compatibility before proceeding with the installation. All local codes shall take precedence over information in this document. Antenna systems should be inspected once a year by qualified personnel to verify proper installation, maintenance, and condition of equipment. Communication Components Antennas Inc. disclaims any liability or responsibility for the results of improper or unsafe installation.

Fig. 1: Radio Preparation

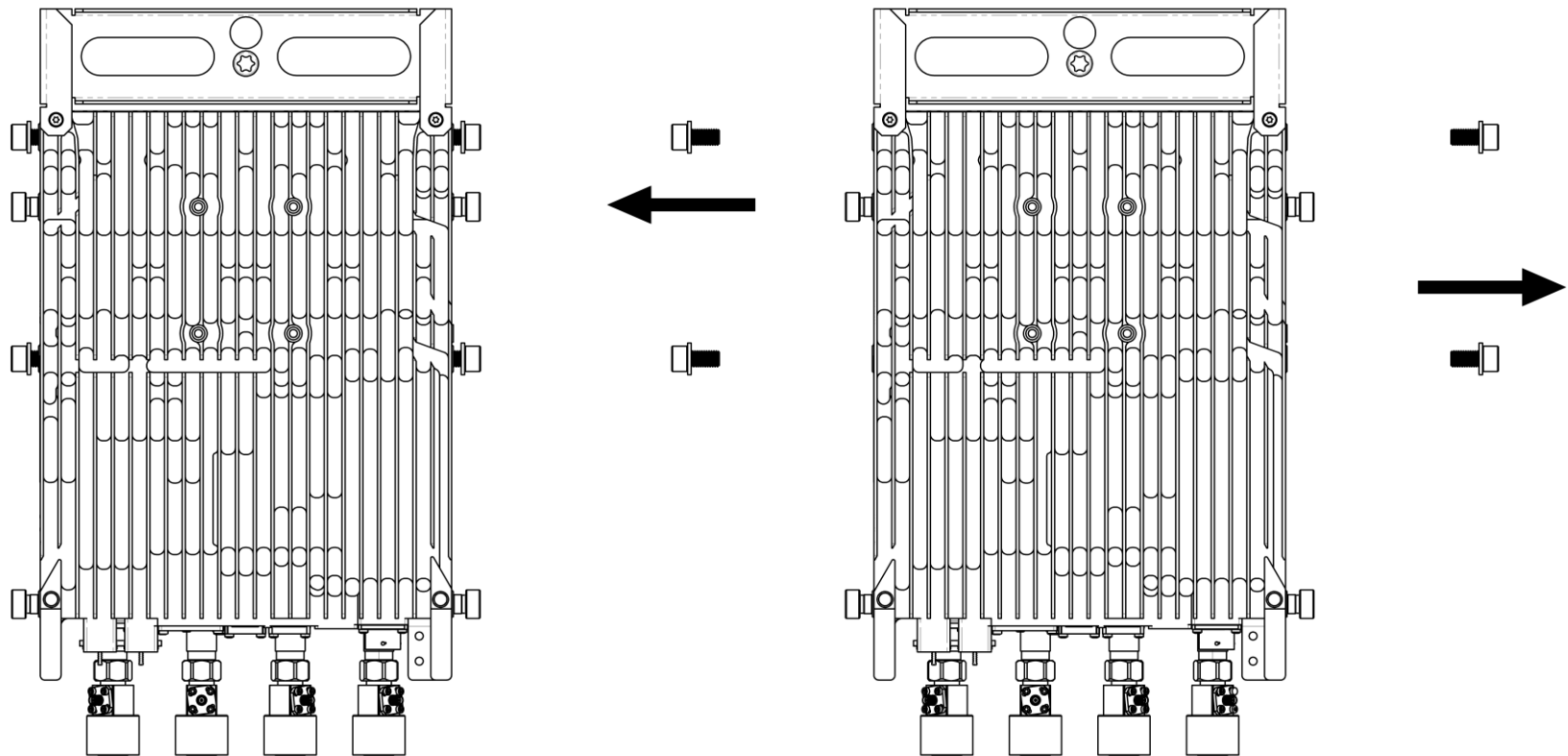


Fig. 2: Installation on Mast

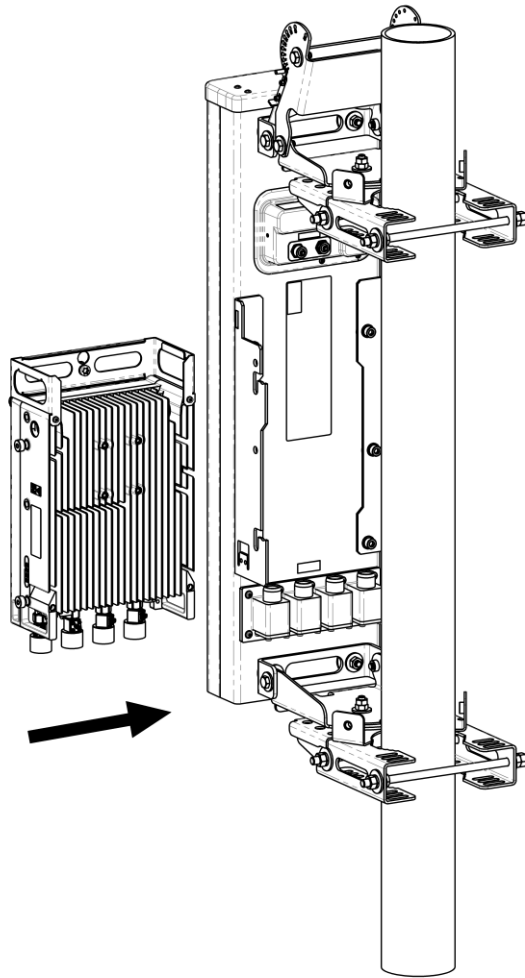


Fig. 3: Installation of Radio onto the Antenna Bracket

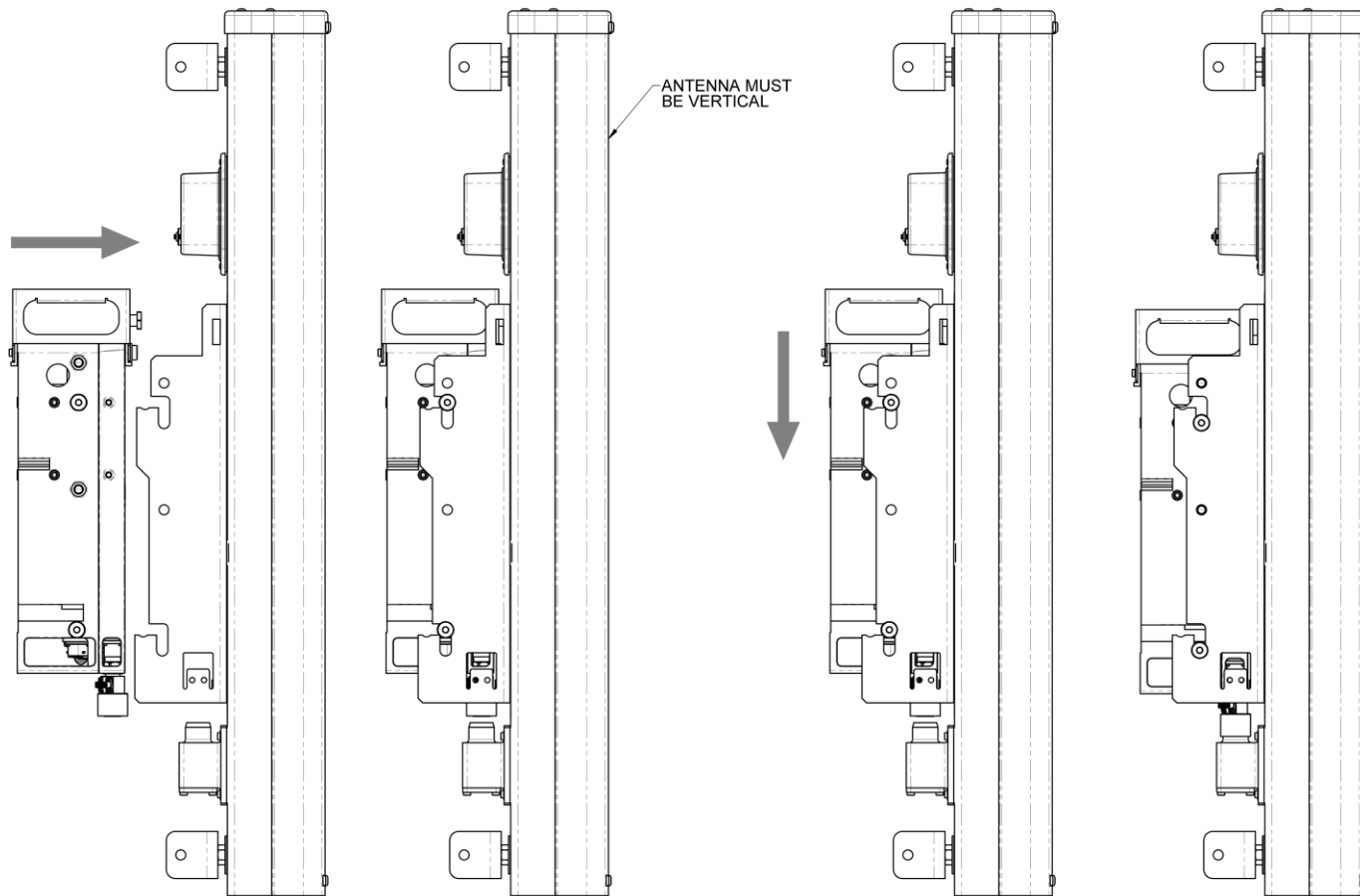


Fig. 4: Radio Installation Extra Views

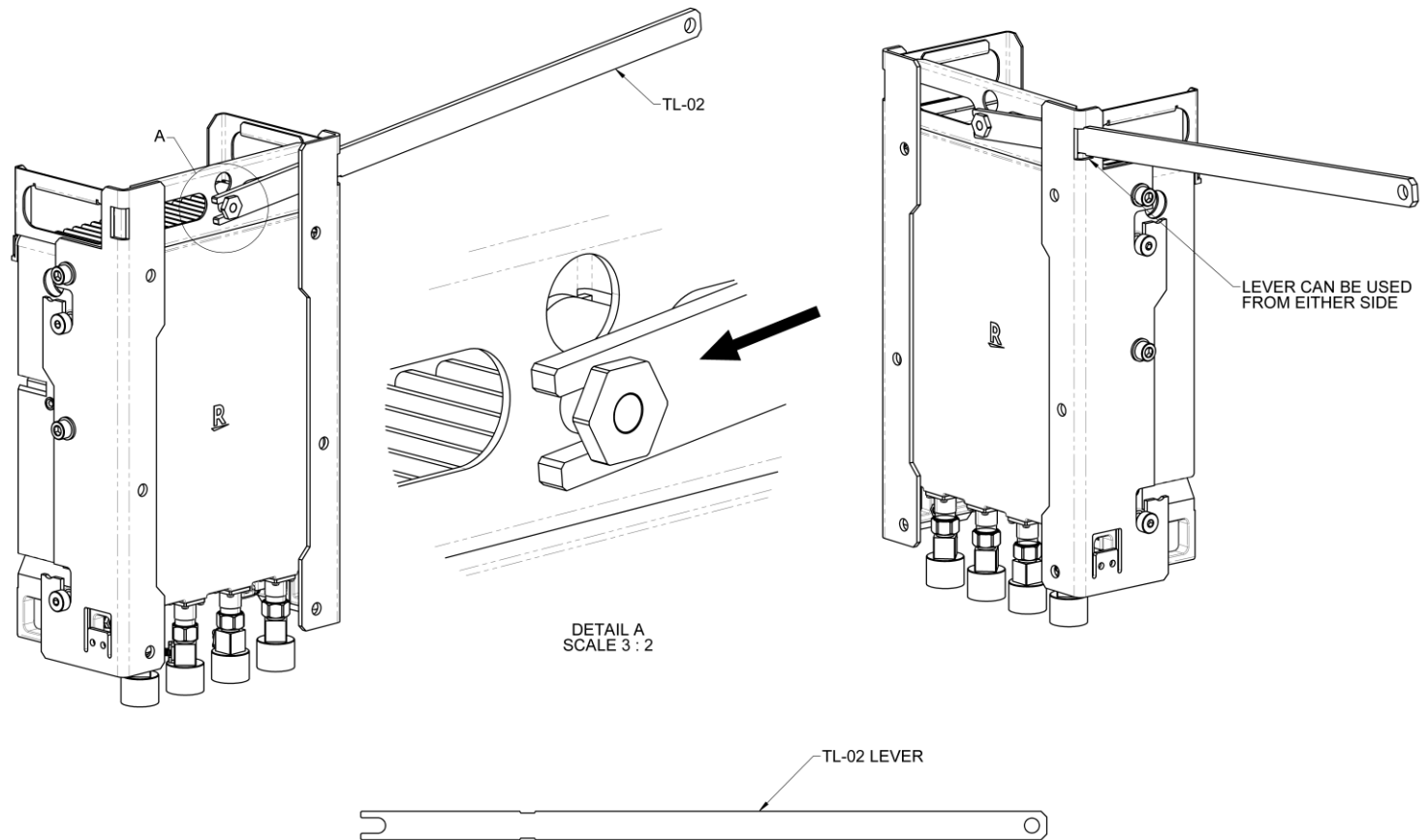


Fig. 5: Hardware Identification and Final Assembly View

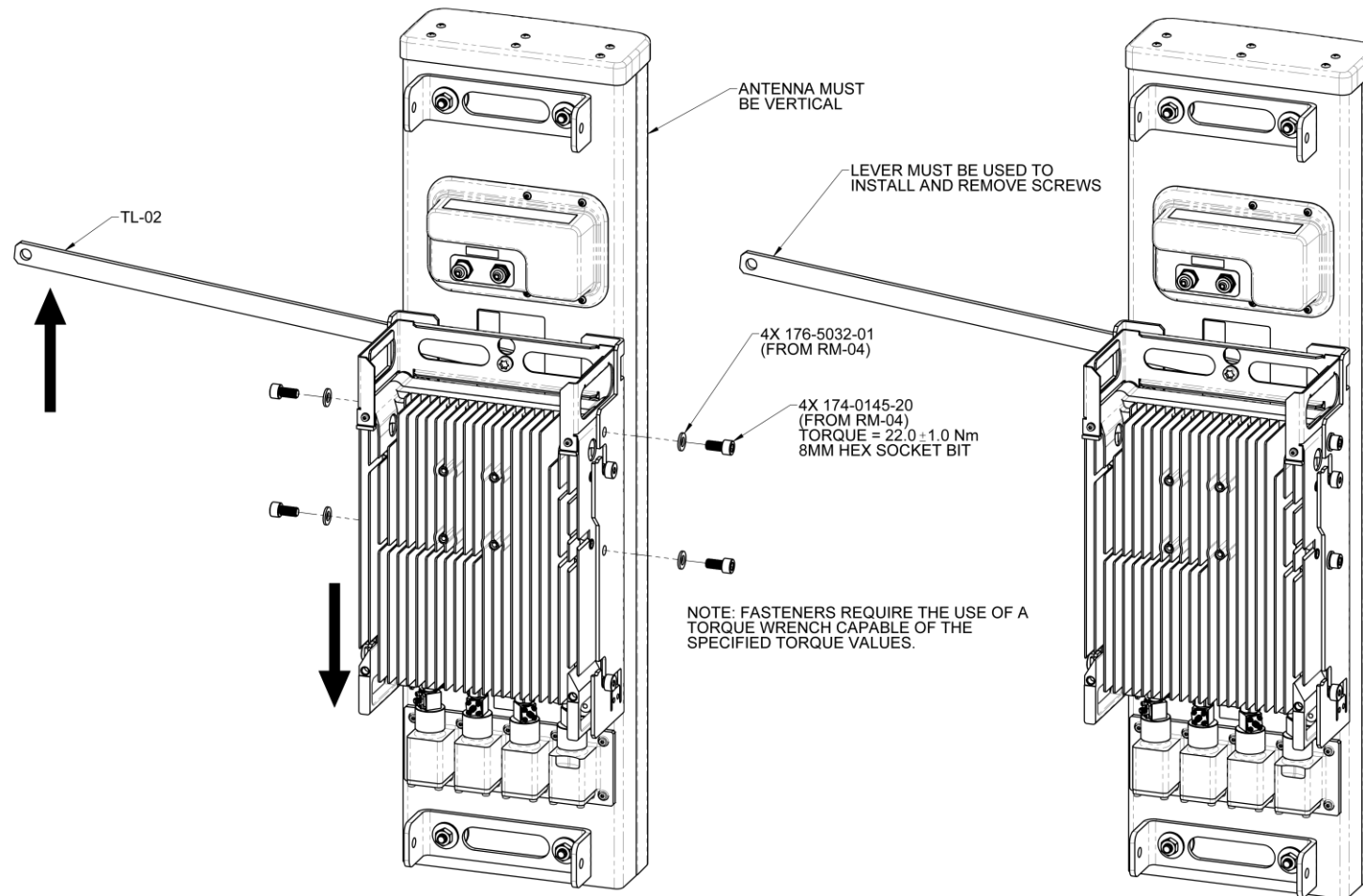


Fig. 6: Radio Removal

