

The installation, maintenance, or removal of an antenna requires qualified, experienced personnel. You must refer to the appropriate local safety codes and ensure proper electrical and electromagnetic compatibility before proceeding with the installation. All local codes shall take precedence over information in this document. Antenna systems should be inspected once a year by qualified personnel to verify proper installation, maintenance, and condition of equipment. Communication Components Antennas Inc. disclaims any liability or responsibility for the results of improper or unsafe installation.

RM-03 Installation to MTI Radio Guide

Fig. 1: Radio Bracket and Boots Balloon Callout

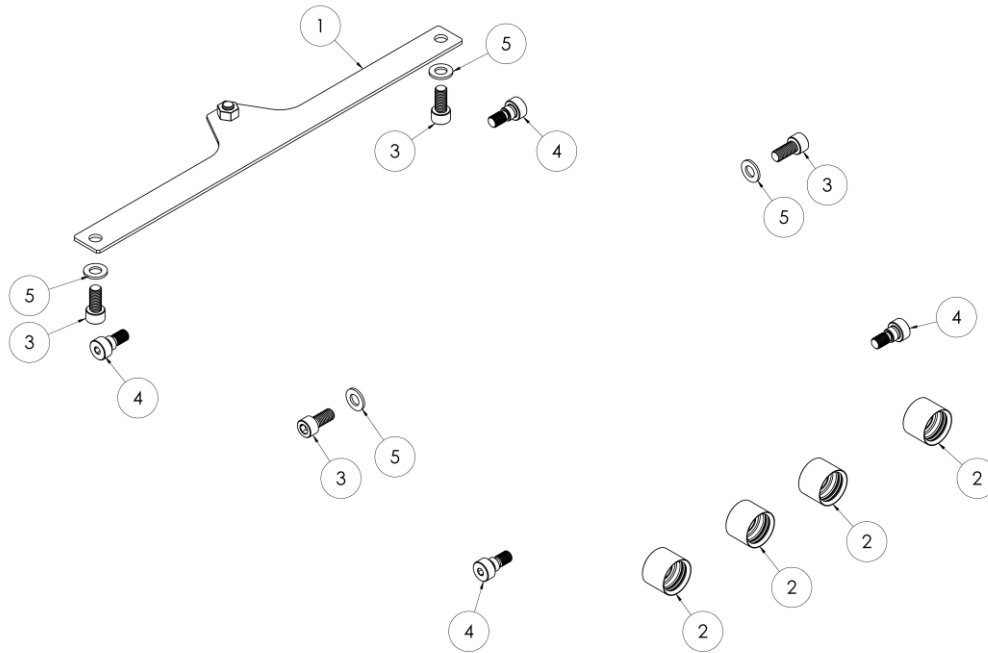


Fig. 2: Radio Bracket and Boots BOM

ITEM	QTY	DESCRIPTION
1	1	SUBASSEMBLY, RADIO BRACKET
2	4	BOOT, CONNECTOR
3	4	SCREW, SHCS, M10, 22MM
4	4	SCREW, SHSS, M10, 8MM
5	4	WASHER, M10

Fig. 3: Location of Guide and Locking Screws on Radio

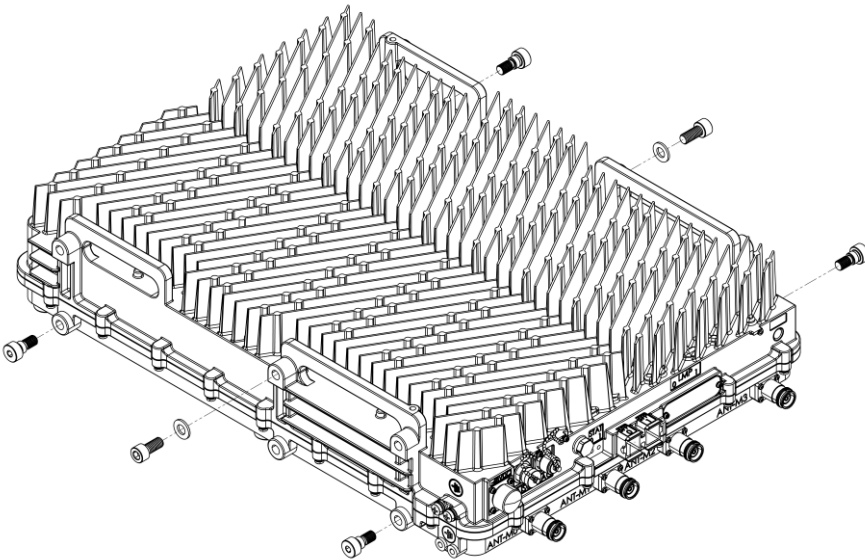
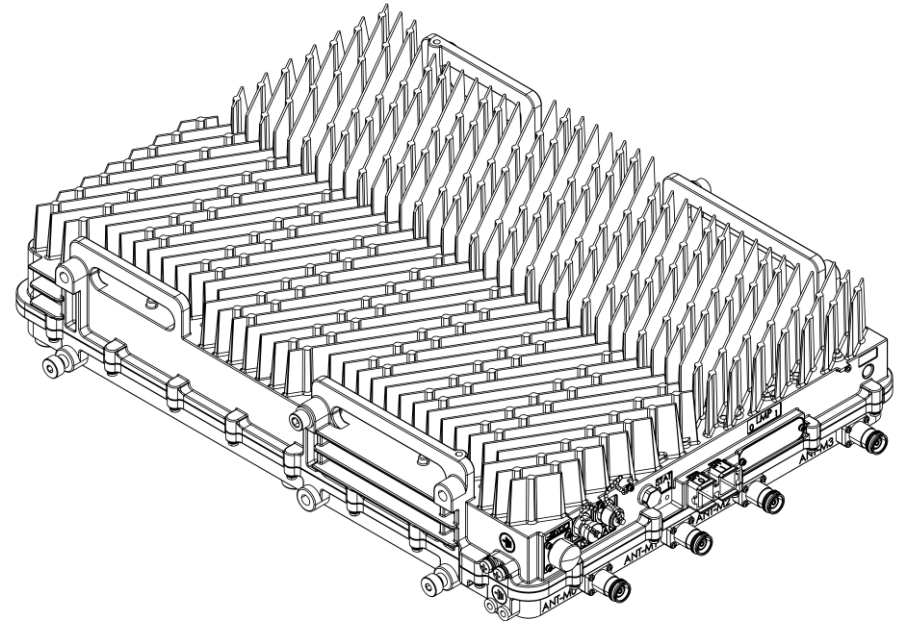


Fig. 4: Guide and Locking Screws Installed on Radio



Step	Task
1	Place the two M10 SHC screws (Item 3), through the M10 Plain Washers (Item 5) into the radio as shown in Fig. 3. Torque the SHCS screws to 5 ± 0.5 N·m (3.7 ± 0.4 ft-lbs) with an 8mm hex socket bit. Install the M10 SHS screws (Item 4) into the radio and torque screws to 22.0 ± 1.0 N·m (16.2 ± 0.75 ft-lbs) as shown in Fig. 3 with a 6mm hex socket bit. The radio assembly should appear as shown in Fig. 4 once hardware is installed.
Note 1	Fasteners require the use of a torque wrench capable of the specified torque values
Note 2	Item 3 may not bottom out. This is a temporary spot until final installation.

Fig. 5: Location of Connector Boots on Radio

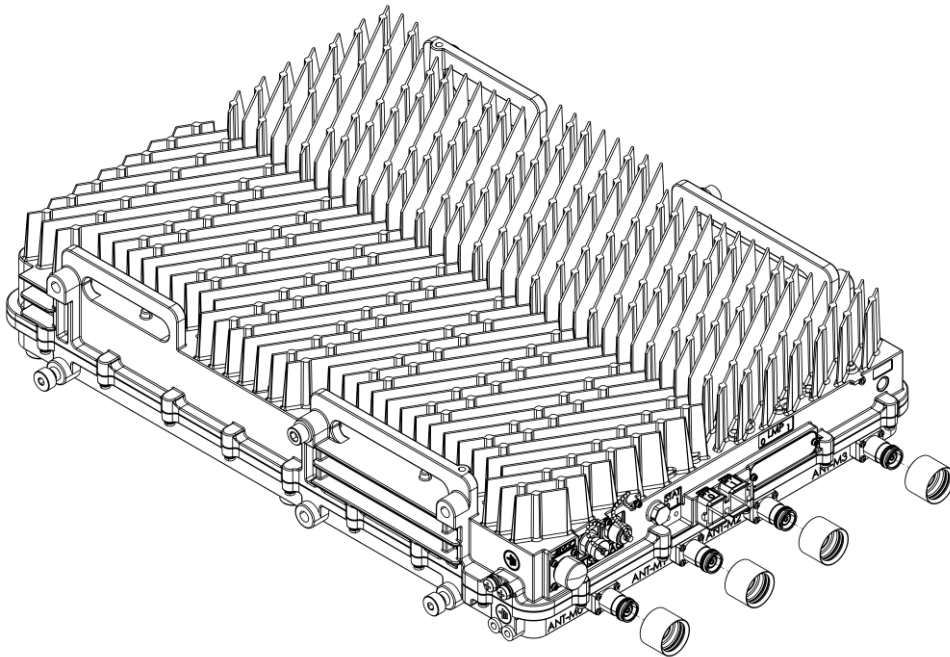
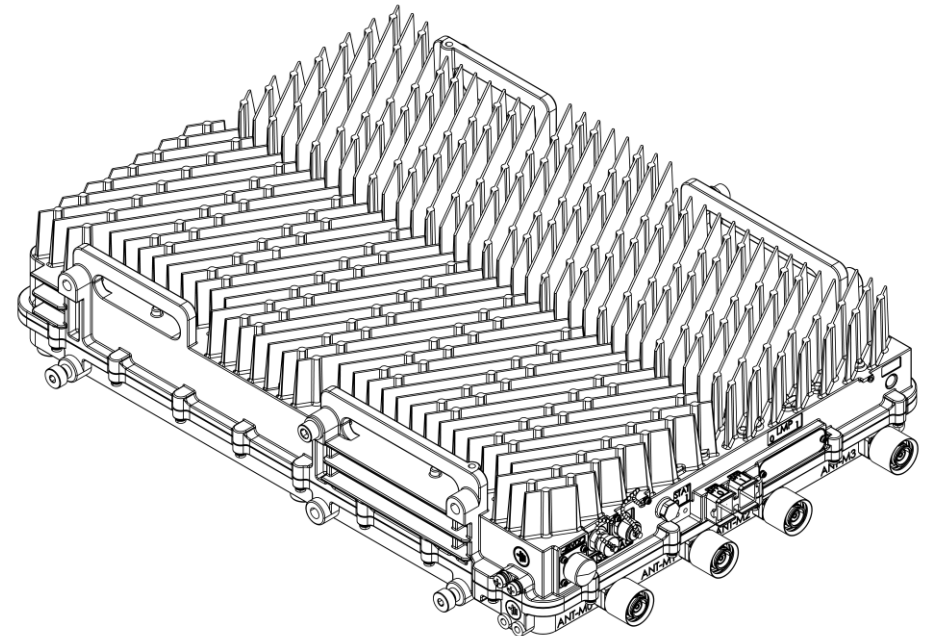


Fig. 6: Radio Connector Boots Installed on Radio



Step	Task
------	------

- | | |
|---|--|
| 2 | Install Connector Boots (Item 2) on the radio connectors as shown in Fig. 5. Press Connector Boots over the connector threads until backside of boot touches the connector screws. The radio/bracket assembly should appear as shown in Fig. 6 once installed. |
|---|--|

RM-03 Installation to MTI Radio Guide

Fig. 7: Location of Bracket on Radio

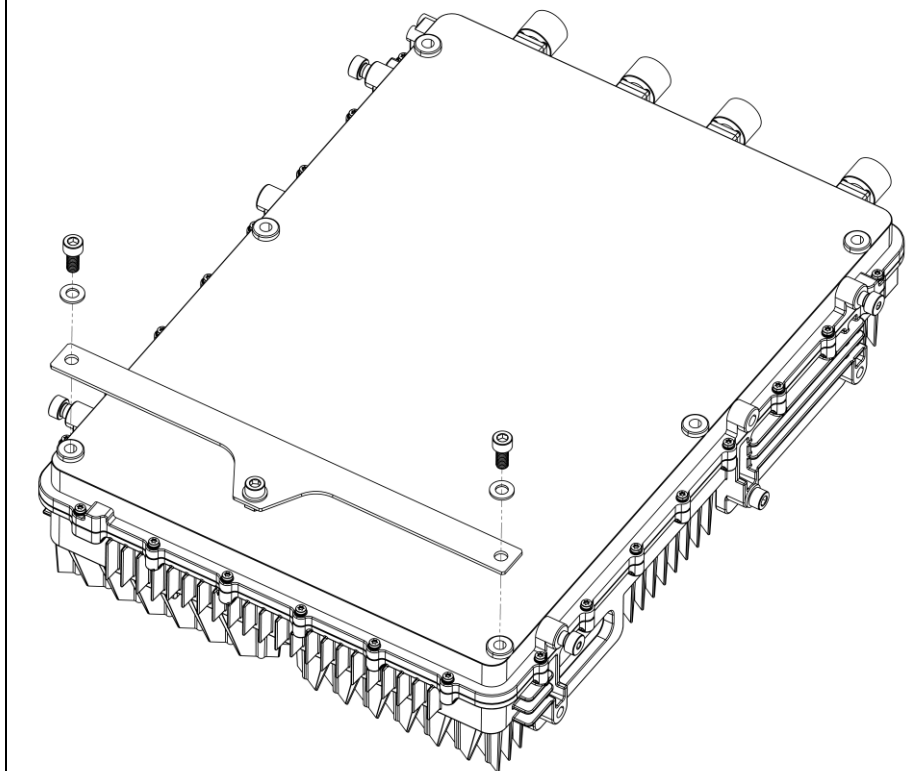
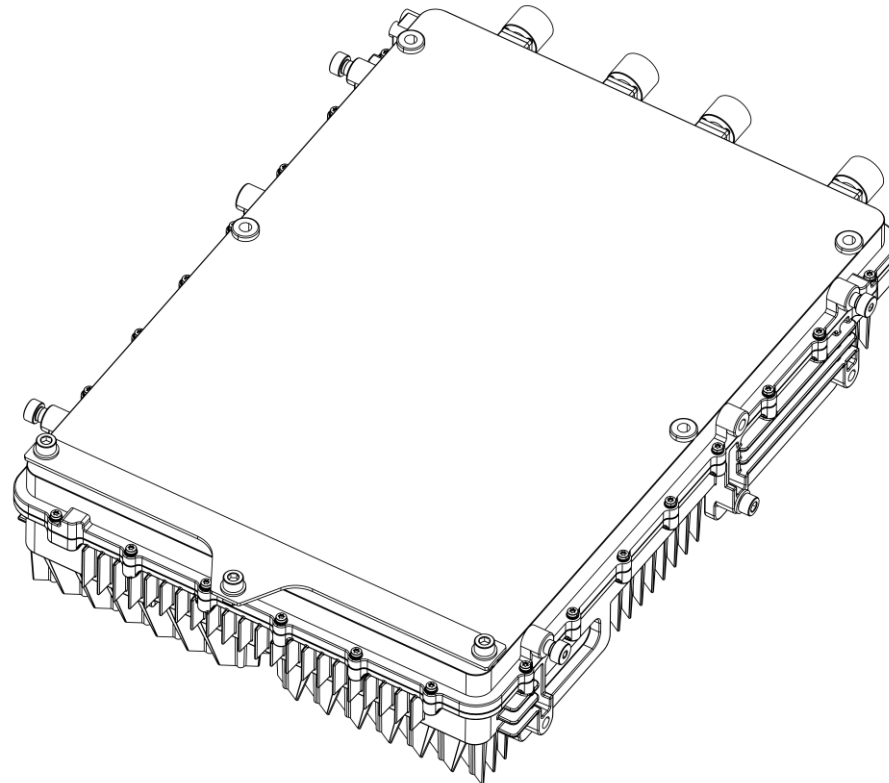


Fig. 8: Bracket Installed on Radio



Step	Task
3	Place the two M10 SHC screws (Item 3), through M10 Plain Washer (Item 5), and through Radio Bracket Assembly (Item 1). Locate bracket over radio. Torque the M10 SHC into radio with a value of 22 ± 1.0 N·m (16.2 ± 0.75 ft-lbs) as shown in Fig 7 with an 8mm hex socket bit. The radio/bracket assembly should appear as shown in Fig. 8 once the bracket is installed.

Step	Task
Note 3	Fasteners require the use of a torque wrench capable of the specified torque values