

# Mast Bracket Clamp Installation Guide MBC-07

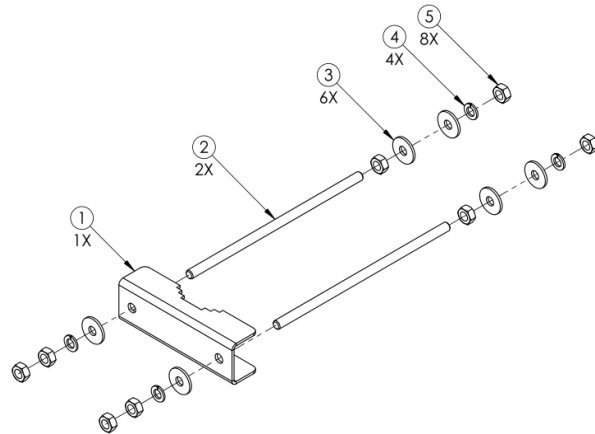


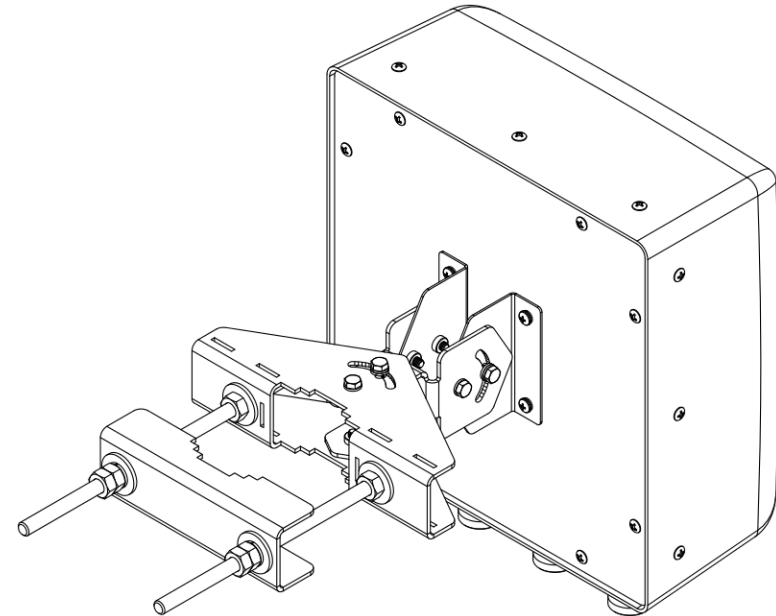
Fig. 1: MBC-07 Mast Bracket Clamp BOM

ITEM	QTY	DESCRIPTION
1	1	MAST BRACKET, CLAMP, MBC-07
2	2	THREADED ROD, M10X1.5, 250L, DIN 975, CLASS 8.8, ROHS HOT DIP GALV
3	6	WASHER, FLAT, M10, 30 OD, MIN 2.3 THK, DIN 9021, STEEL, ROHS HOT DIP GALV
4	4	WASHER, SPLT LOCK, M10, DIN 127B, STEEL, ROHS HOT DIP GALV
5	8	NUT, HEX, M10X-1.5, DIN 934, STEEL, CLASS 8, ROHS HOT DIP GALV

## Step Task

- 1 Attach the mast bracket clamp to the adjustable mast bracket as shown in Fig. 2. Refer to the materials list shown in Fig.1 to properly identify the required items. Refer to the MBK-08 (50-000051-01) Installation Guide for Installation of the Adjustable Mast Bracket on the Antenna.
- 2 Adjust the position of the threaded rod on the antenna side of brackets as required. Torque nuts to 20 N-m (15 ft-lbs).

Fig. 2: Antenna w/Adjustable Mast Bracket Mounted on MBC-07 Mast Bracket Clamp Kit



## Step Task

- 3 Lift the antenna up to the mast location to continue assembly.
- 4 Align the antenna in the direction specified by the site engineer. The orientation of the antenna is normal to the sector unless specifically required otherwise.
- 5 Secure the antenna to the mast and torque all mounting fasteners to 20 N-m (15 ft-lbs). Refer to Antenna Installation Guide.

## DISCLAIMER:

The installation, maintenance, or removal of an antenna requires qualified, experienced personnel. You must refer to the appropriate local safety codes and ensure proper electrical and electromagnetic compatibility before proceeding with the installation. All local codes shall take precedence over information in this document. Antenna systems should be inspected once a year by qualified personnel to verify proper installation, maintenance, and condition of equipment. Communication Components Antennas Inc. disclaims any liability or responsibility for the results of improper or unsafe installation.