

MBC-02 Typical Mast Bracket Clamp Installation Guide

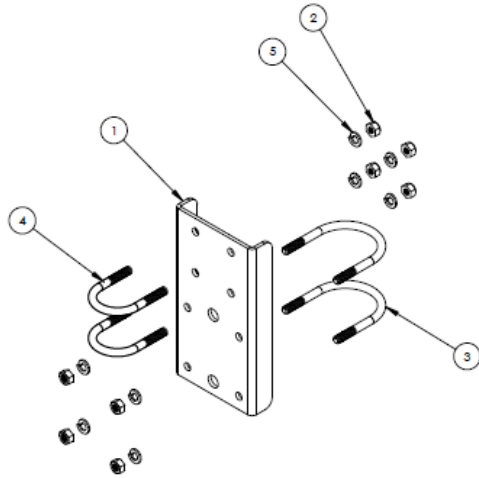


Fig. 1: Adjustable Mast Bracket BOM

ITEM	QTY	DESCRIPTION
1	1	BRACKET, CLAMP, MBC-02, SMALL CELL ANTENNA
2	8	NUT, HEX, 5/16"-18
3	2	U-BOLT, 5/16"-18 X 1" THREAD LENGTH, FOR 2 1/2" OD, (FOR MOUNTING POLE)
4	2	U-BOLT, 5/16"-18 X 1" THREAD LENGTH, FOR 1 1/2" OD, (FOR ANTENNA MAST)
5	8	WASHER, SPLIT LOCK, 5/16"

Step Task

- 1 Align the antenna radiating direction(s) indicated on the bottom of the antenna as specified by the site engineer.
- 2 Once the Small Cell Antenna has been adjusted to the desired position, torque all nuts to 14 N-m (10 ft-lbs). *Note: Lag Bolts required for mounting on wooden poles or flat surfaces (e.g. Wall Mount) are not supplied. Installation personnel will need to supply (procure) this hardware.*

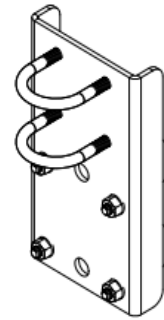
DISCLAIMER:

The installation, maintenance, or removal of an antenna requires qualified, experienced personnel. You must refer to the appropriate local safety codes and ensure proper electrical and electromagnetic compatibility before proceeding with the installation. All local codes shall take precedence over information in this document. Antenna systems should be inspected once a year by qualified personnel to verify proper installation, maintenance, and condition of equipment. Communication Components Antennas Inc. disclaims any liability or responsibility for the results of improper or unsafe installation.

50-000040-04 Installation Guide

Suggested Mounting Options

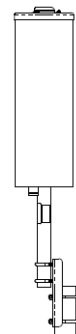
Vertical Pole



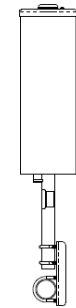
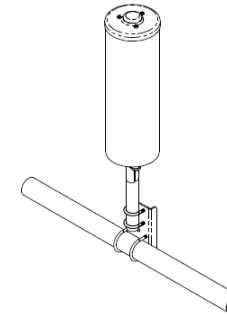
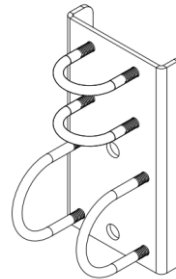
Isometric View



Side View



Horizontal Pole



Wooden Pole or Wall

