

- CCI's high power low PIM termination load support 5W across a wideband from 380 to 3800 MHz
- Excellent return loss performance
- Available with Male 4.3-10 (or optional 7-16) Connectors
- High reliability design
- Designed for ultra low PIM performance
- RoHS compliant

### Overview

CCI's high power low PIM termination load covers a broad frequency range from 380 to 3800 MHz, while delivering high power performance of up to 5 Watts. This load has excellent return loss performance. The unit is ideal for optimizing RF power distribution, which is often required for distributed antenna systems (DAS).

The extremely wide frequency range allows use with multiband and broadband antennas as well as leaky cable systems. The high power handling makes this load well-suited for use with wireless base stations. The load has been designed and constructed with minimal solder joints which assures the correct dissipative loss and enhances the overall reliability.

The attenuator can be configured with either Male 4.3-10 (or optional 7-16) connectors.

CCI filter and combiner products are designed and produced to ISO 9001 certification standards for reliability and quality at our state-of-the-art engineering and manufacturing facilities.



# DAS Products

## SPECIFICATIONS

### High Power Low PIM Load

TMO-88-5-xx

#### Electrical Specification

RF Parameter	
Frequency Range	380 - 3800 MHz
Return Loss	≤ -19 dB typ

General Characteristics	
Continuous Average Power	5 W
Impedance	50 ohms
Intermodulation Performance	< -117 dBm (-1 dBc) min; (2 x +43 dBm tones) over 698 - 2700 MHz

#### Environmental Specification

Operating Temperature	-30 °C to +65 °C
Ingress Protection	IP5X

#### Mechanical Specification

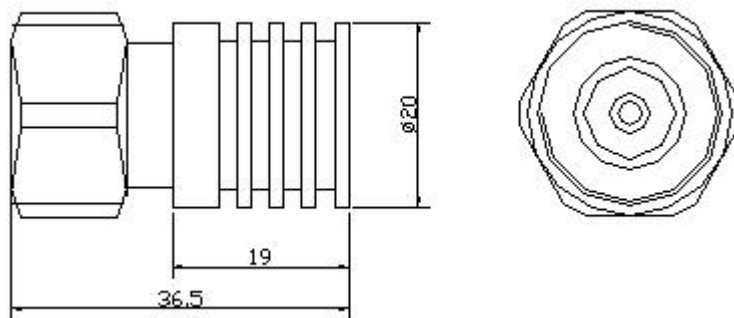
Model	TMO-88-5-xx
Connectors	4.3-10 (or optional 7-16) Male x 1
Body Dimensions	19.0 x 20.0 Dia. mm (0.75 x 0.79 Dia. in.)
Body & Connector Dimensions	36.5 x 20.0 Dia. mm (1.44 x 0.79 Dia. in.)
Weight	0.5 Kg (1.1 lbs)



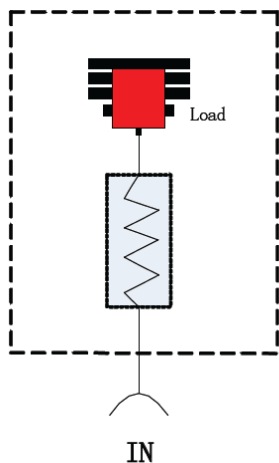
## SPECIFICATIONS

### High Power Low PIM Load

TMO-88-5-xx



5 W Low PIM Termination Load with DIN Male Connector Outline Drawing



5W Low PIM Load Block Diagram



# DAS Products

## STANDARDS & CERTIFICATIONS

### High Power Low PIM Load

TMO-88-5-xx

#### Parts & Accessories

**TMO-88-5-M1** High Power, Low PIM 5 Watt Termination Load with optional 7-16 Male Connector

**TMO-88-5-M2** High Power, Low PIM 5 Watt Termination Load with 4.3-10 Male Connector

#### Standards & Compliance

**Safety** EN 60950-1, UL 60950-1

**Emission** EN 55022

**Immunity** EN 55024

**Environmental** IEC 60068-2-1, IEC 60068-2-2, IEC 60068-2-5, IEC 60068-2-6, IEC-60068-2-11, IEC 60068-2-14, IEC 60068-2-18, IEC 60068-2-27, IEC 60068-2-29, IEC 60068-02-30, IEC 60068-2-52, IEC 60068-2-64, GR-63-CORE 4.3.1, EN 60529 IP20

#### Certifications

Federal Communication Commission (FCC) Part 15 Class B, CE, CSA US, ISO 9001



**CCI** Communication Components Inc.  
EXTENDING WIRELESS PERFORMANCE