



# Antennas

DATA SHEET

## Triple Mount Cluster Bracket

TM-01



- This two part antenna mounting bracket is designed to support up to 3 CCI Multiport Panel Antennas clamped to a single mounting pole
- Triple Mount Cluster Bracket kit has fixed tilt brackets
- The Triple Mount Cluster Bracket Kit is designed for use with many of CCI's Multiport Panel Antennas
- Suitable for most 2', 4' and 6' antennas - - Please check with your local CCI Sales Office for a list of supported antenna products
- Rugged and weather resistant design
- Adjustable clamps fit poles from Ø2 – 5 inches (Ø51 – 127 mm)

### Overview

This fixed tilt Triple Mount Cluster Bracket kit is designed for use with up to 3 CCI Multiport Panel Antennas from 2 to 6 feet (0.6 to 1.8 m) tall. The Triple Mount Cluster Bracket Kit can accommodate pole diameters ranging from 2 – 5 inches (51 – 127 mm).

CCI antenna brackets are designed and produced to ISO 9001 certification standards for reliability and quality in our state-of-the-art manufacturing facilities.

### Applications

- Ideal for pole mounting in urban settings
- When space is a premium up to 3 sectors of antennas can be deployed on a single pole



# Antennas

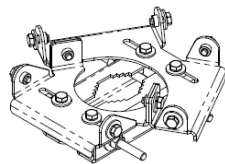
## SPECIFICATIONS

### Triple Mount Cluster Bracket

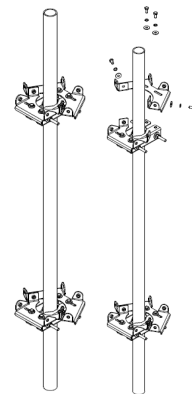
TM-01

#### Mechanical

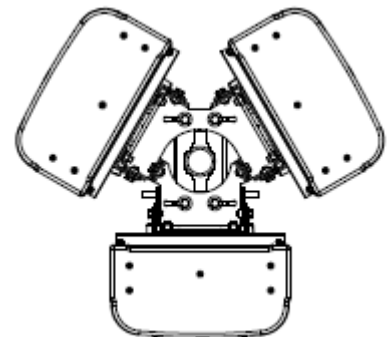
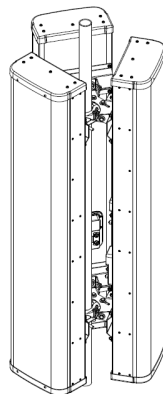
Weight	21.6 lbs (9.8 kg)
Fastener Size	M10
Installation Torque	40 ft-lb (54 N-m)
Hinge Pitch (Vertical)	13.0 in (330 mm) or 31.5 in (800 mm) or 47.2 in (1200 mm)
Mechanical Tilt Adjustment	None



TM-01 Bracket



TM-01 Mounting Brackets (on Pole)



3 - 65° Antennas Mounted on Pole using TM-01 Brackets (Iso and Top Views)



# Antennas

ORDERING

Triple Mount Cluster Bracket

TM-01

Parts & Accessories

Model number TM-01

Overall Weight 17.6 lbs (8.0 kg)