

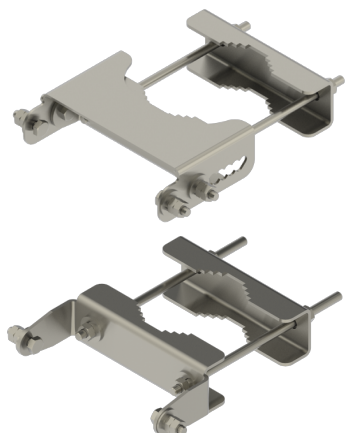


Antennas

DATA SHEET

Mounting Bracket Kit

MBK-03



- This two part antenna mounting bracket is designed for use with many of CCI's 2 – 3.5 ft tall (0.6 – 1m) antennas
- Bracket kit has a fixed lower bracket and adjustable upper bracket that allows the antenna to be down tilted up to 12 degrees, in 1 degree increments (or uptilted if mounted in reverse)
- Rugged and weather resistant design
- Adjustable clamps fit poles from Ø2 – 5 inches (Ø51 – 127 mm)

Overview

This adjustable tilt Pole Mounting Bracket is designed for use with CCI's MultiPort and MultiBeam models under 4 ft (1.2m) tall. The MBK-03 bracket kit delivers a very stable mounting with the flexibility of up to 12 degrees of down tilt, in 1 degree increments. The rugged design supports CCI's antennas while resisting the elements. The clamps adjust to fit pole diameters ranging from 2 – 5 inches (51 – 127 mm). CCI antenna brackets are designed and produced to ISO 9001 certification standards for reliability and quality in our state-of-the-art manufacturing facilities.

Applications

- Ideal for pole mounting in urban settings



Antennas

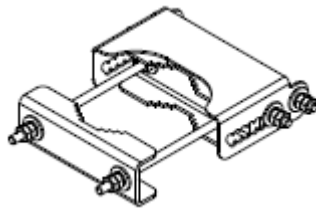
SPECIFICATIONS

Mounting Bracket Kit

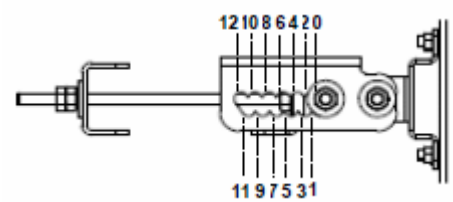
MBK-03

Mechanical

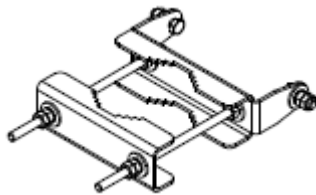
Weight	9.8 lbs (4.4 kg)
Hinge Pitch	13 in (330 mm)
Mounting Pole Dimension	2 to 5 in (5 to 12 cm)
Fastener Size	M10
Installation Torque	15 ft-lbs (20 Nm)
Mechanical Tilt Adjustment	0° - 12°



MBK-03 Top Adjustable Bracket



MBK-03 Top Adjustable Bracket Side View



MBK-03 Bottom Fixed Bracket



Antennas

ORDERING

Mounting Bracket Kit

MBK-03

Parts & Accessories

Model number MBK-03

Overall Weight 9.8 lbs (4.4 kg)