

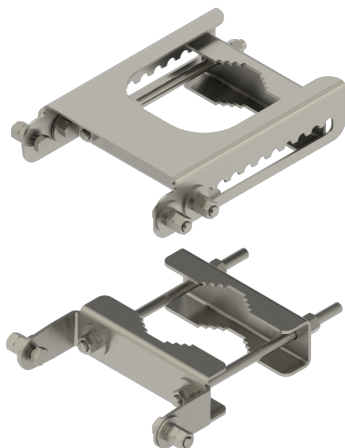


Antennas

DATA SHEET

Mounting Bracket Kit

MBK-01



- This two part antenna mounting bracket is designed for use with many of CCI's taller antennas, 5ft (1.5m) or longer
- Bracket kit has a fixed lower bracket and adjustable upper bracket that allows the antenna to be down tilted up to 10 degrees, in 1 degree increments (or uptilted if mounted in reverse)
- Rugged and weather resistant design
- Adjustable clamps fit poles from Ø2 – 5 inches (Ø51 – 127 mm)

Overview

This adjustable tilt Pole Mounting Bracket is designed for use with CCI's MultiPort, Bi-Sector and MultiSector antennas that are 5 feet (1.5m) or taller. The MBK-01 bracket kit delivers a very stable mounting and is adjustable from 0 to 10 degrees of down tilt in 1 degree increments. The rugged design supports CCI's taller antennas while resisting the elements. The clamps adjust to fit pole diameters ranging from 2 – 5 inches (51 – 127 mm). CCI antenna brackets are designed and produced to ISO 9001 certification standards for reliability and quality in our state-of-the-art manufacturing facilities.

Applications

- Ideal for pole mounting in urban settings



Antennas

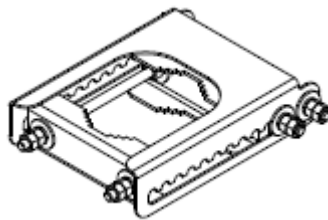
SPECIFICATIONS

Mounting Bracket Kit

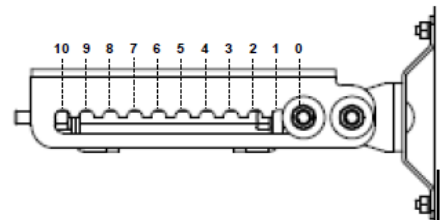
MBK-01

Mechanical

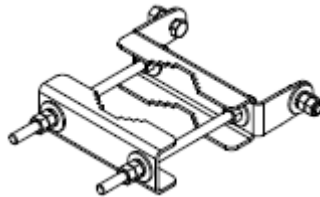
Weight	12.6 lbs (5.7 kg)
Hinge Pitch	47.25 in (1200 mm)
Mounting Pole Dimension	2 to 5 in (5 to 12 cm)
Fastener Size	M12
Installation Torque	40 ft·lb (54 Nm)
Mechanical Tilt Adjustment	0° - 10°



MBK-01 Top Adjustable Bracket



MBK-01 Top Adjustable Bracket Side View



MBK-01 Bottom Fixed Bracket



Antennas

ORDERING

Mounting Bracket Kit

MBK-01

Parts & Accessories

Model number MBK-01

Overall Weight 12.6 lbs (5.7 kg)